



S2C3

SWITCH

SINGLE-POLE, SINGLE-THROW ABSORPTIVE

Frequency Range (min)	4 – 12	GHz
Insertion Loss (max)	2.2	dB
VSWR (max)	1.8	ratio
Isolation (min)	70	dB
Switching speed (max)	100	nsec
CW RF power, operating (max)	0.5	W

NOTES:

DC Bias: +5V +/-0.5V @ 80mA max
(Standard) -15V +/-3V @ 50mA max

DC Bias: +5V +/-0.5V @ 100mA max
(-5 option) -5V +/-0.5V @ 60mA max

DC Bias: +15V +/-3V @ 80mA max
(-12 option) -15V +/-3V @ 50mA max

Control: TTL 0 = Low Loss E1 controls J2 – J1
(Standard) TTL 1 = Isolation E2 controls J3 – J1

Single Bit Control: E1=0: J2 – J1 low loss, J3 – J1 isolation (E2=N/C)
(-1 option) E1=1: J3 – J1 low loss, J2 – J1 isolation (E2=N/C)

Absorptive switch: Internal 50Ω terminations at J2 and J3 (in isolation mode).

Switching speed is defined as 50%TTL to 90% (t-on) and 50%TTL to 10%RF (t-off).

ENVIRONMENTAL SPECIFICATIONS:

MIL-E-5400, MIL-STD-202, MIL-E-16400
Operating Temp: -55°C to +85°C
Storage Temp: -65°C to +125°C
Humidity: MIL-STD-202F, M103, Cond B
Shock: MIL-STD-202F, M213, Cond B
Altitude: MIL-STD-202F, M105, Cond B
Vibration : MIL-STD-202F, M204, Cond B
Thermal Shock: MIL-STD-202F, M107, Cond A
Temperature Cycle: MIL-STD-202F, M105C, Cond D

MECHANICAL SPECIFICATIONS:

Case Styles: S2 Outline (Two bit control)
S2-1 Outline (Single bit control)

Finish: Gold plate per MIL-G-45204, Chem film per MIL-C-5541

Connectors: SMA Female per MIL-C-39012

Bias & Control Pins: ø0.02" x 0.15" long

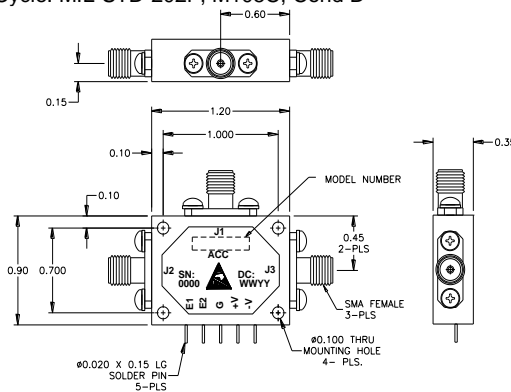
Weight: 20g max

Mounting: ø0.10" through holes (4) places

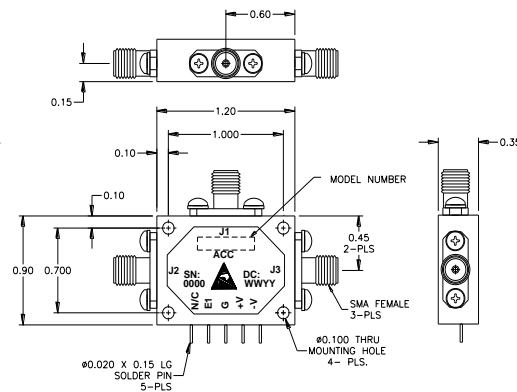
SCREENING:

Internal Visual per MIL-STD-883, Method 2017
Temperature Cycle: -65°C to +100°C, 10 cycles

Hermetically-sealed switches are fine and gross leak checked per MIL-STD-883, Method 1014.



OUTLINE CASE STYLE S2



OUTLINE CASE STYLE S2-1

PART NUMBER ORDERING INFORMATION:

- Add "-RC" suffix: RoHS-compliant
- Add "-5" suffix: +/-5V DC supplies
- Add "-5-RC" suffix: +/-5V DC supplies, RoHS-compliant
- Add "-12" suffix: +/-12V to 18V DC supplies
- Add "-12-RC" suffix: +/-12V to 18V DC supplies, RoHS-compliant
- Add "-1": Single bit logic control
- Add "-1-RC" suffix: Single bit logic control, RoHS-compliant
- Add "-1-5" suffix: Single bit logic control, +/-5V DC supplies
- Add "-1-5-RC" suffix: Single bit logic control, +/-5V DC supplies, RoHS-compliant
- Add "-1-12" suffix: Single bit logic control, +/-12V to 18V DC supplies
- Add "-1-12-RC" suffix: Single bit logic control, +/-12V to 18V DC supplies, RoHS-compliant
- Add "-H" suffix: Hermetic seal (does not apply to RoHS-compliant)