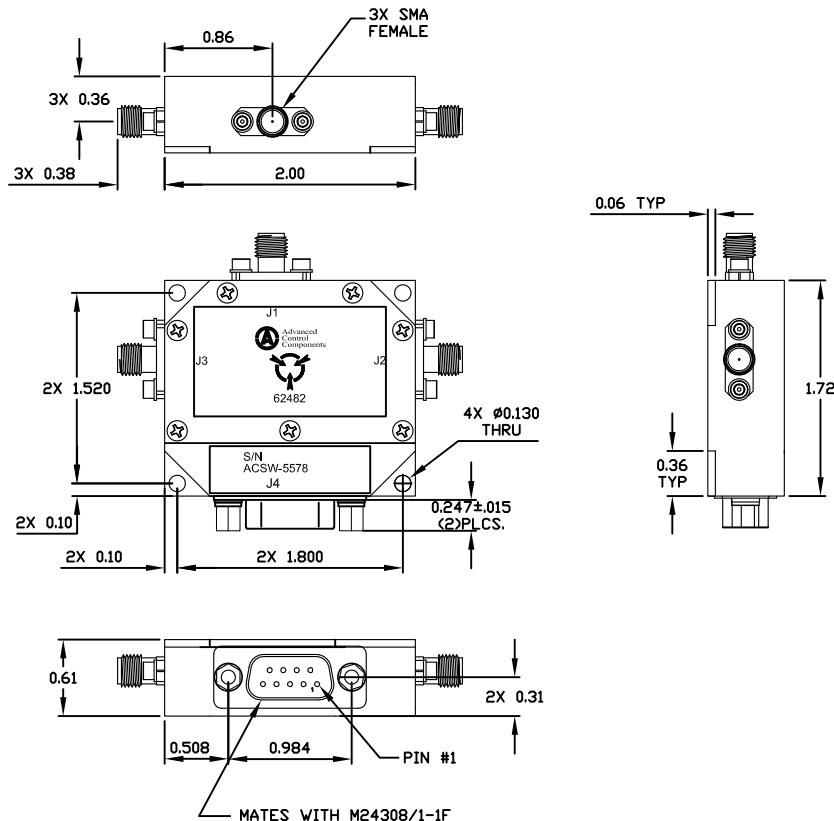




PRODUCT SPECIFICATION
PART NUMBER: ACSW-5578
DESCRIPTION: SWITCH, SP2T, T/R ABSORPTIVE RX

FREQUENCY BAND:	2500-6000 MHz
RF INPUT POWER TX:	80 WATTS CW
RF INPUT POWER RX:	2W CW
RF LEAKAGE (J1-J2)	+15dBm max
INSERTION LOSS TX TO ANT:	-1.4dB (1.0dB GOAL)
INSERTION LOSS ANT TO RX:	-2.4dB (1.5dB GOAL)
ISOLATION TX TO RX:	60dB MIN. (TX)
ISOLATION ANT TO TX:	20dB MIN. (RX)
INPUT/OUTPUT VSWR:	1.5:1 MAX
IMPEDANCE:	50 OHMS
ANTENNA CONTINUOUS LOAD VSWR:	2.0:1
	3.0:1 any phase 10sec No damage @150W
HARMONICS:	-50dBc
SWITCHING SPEED:	6 microseconds. (50% TTL TO 90/10% RF)
DC INPUT VOLTAGE:	+5V @ 300 mA MAX. -125v@10 ma MAX.
CONTROL:	TTL control TX=Logic "1" RX=Logic "0"
TEMP. RANGE (OPERATING):	-40°C TO +95°C
(STORAGE):	-46°C TO +85°C
RF CONNECTORS:	SMA FEMALE
BIAS AND CONTROL:	9pin D sub Connector

REV.	DESCRIPTION	DATE	APP'D
A	Preliminary Release	06/03/09	MG
B	Second Release		



This document is the property of Advanced Control Components Inc. and contains company confidential and/or proprietary information. It is issued in strict confidence and the recipient shall not reproduce, copy, cause to be reproduced or copied, disclose to others, or use as the basis for manufacture, sale or purchase of apparatus the contents or portions thereof of this document without written permission of Advanced Control Components Inc.

CAUTION
UNLESS THIS DRAWING BEARS AUTHORIZED SIGNED APPROVAL(S) IT IS PRELIMINARY AND IS NOT TO BE USED FOR MANUFACTURING PURPOSES.

UNLESS OTHERWISE SPECIFIED
DIMENSIONS ARE IN INCHES
TOLERANCES ON FINISH: RMS 63
ANGLES: ±1/2° FRACTIONS: ±1/64
4 PLACE DECIMALS: ±.0005
3 PLACE DECIMALS: ±.005
2 PLACE DECIMALS: ±.01

DRAWN BY:	DNC	06/03/09
APPROVED BY:	MG	06/03/09
SHEET:	1 OF 1	