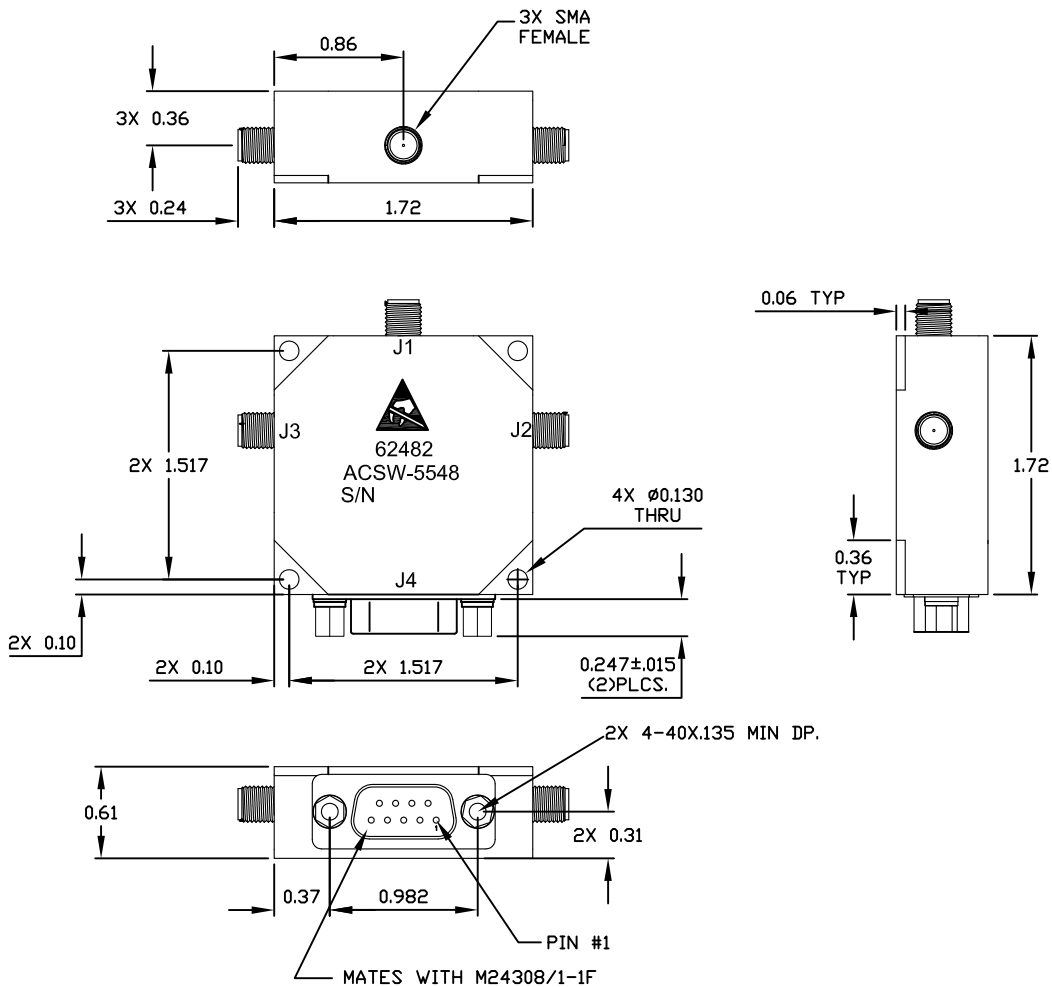




PRODUCT SPECIFICATION  
PART NUMBER: ACSW-5548  
DESCRIPTION: SWITCH, SP2T, T/R, ABSORPTIVE RX

FREQUENCY RANGE: 20-550MHz  
 INSERTION LOSS: 1.2 dB MAX J1-J2 (RX MODE TTL LOW)  
 1.0 dB MAX J3-J1 (TX MODE TTL HIGH)  
 VSWR: 1.5 : 1 MAX J2-J1 (RX MODE TTL LOW)  
 1.5 : 1 MAX J3-J1 (TX MODE TTL HIGH)  
 ISOLATION: 60 dB MIN J3-J2 (TX MODE TTL HIGH)  
 20 dB MIN J3-J1 (RX MODE TTL LOW)  
 SWITCHING SPEED: 10usec MAX (50%TTL-90/10%RF)  
 CONTROL: TTL 0 = RX INSERTION LOSS (J1-J2)  
 TTL 1 = TX INSERTION LOSS (J3-J1)  
 RF POWER, INPUT: 100W OPERATING (J3-J1) COLD SWITCHING  
 DC BIAS: +5V @ 100 mA MAX.  
 -100 @ 10 mA MAX.  
 TEMP. RANGE: (OPERATING): -20° C TO +70° C  
 (STORAGE): -55° C TO +85° C  
 RF CONNECTORS: SMA FEMALE  
 DC AND CONTROL: 9PIN D SUB CONNECTOR  
 FINISH: CHEM FILM

REV.	DESCRIPTION	DATE	APP'D
A	INITIAL RELEASE	01/28/08	MG
B	UPDATED	3/31/10	MG



This document is the property of Advanced Control Components Inc. and contains company confidential and/or proprietary information. It is issued in strict confidence and the recipient shall not reproduce, copy, cause to be reproduced or copied, disclose to others, or use as the basis for manufacture, sale or purchase of apparatus the contents or portions thereof of this document without written permission of Advanced Control Components Inc.

**CAUTION**  
UNLESS THIS DRAWING BEARS AUTHORIZED SIGNED APPROVAL(S) IT IS PRELIMINARY AND IS NOT TO BE USED FOR MANUFACTURING PURPOSES.

UNLESS OTHERWISE SPECIFIED  
 DIMENSIONS ARE IN INCHES  
 TOLERANCES ON FINISH: RMS 63  
 ANGLES: ±1/2° FRACTIONS: ±1/64  
 4 PLACE DECIMALS: ±.0005  
 3 PLACE DECIMALS: ±.005  
 2 PLACE DECIMALS: ±.01

DRAWN BY: MG

01/28/08

APPROVED BY: MG

01/28/08

SHEET: 1 OF 1